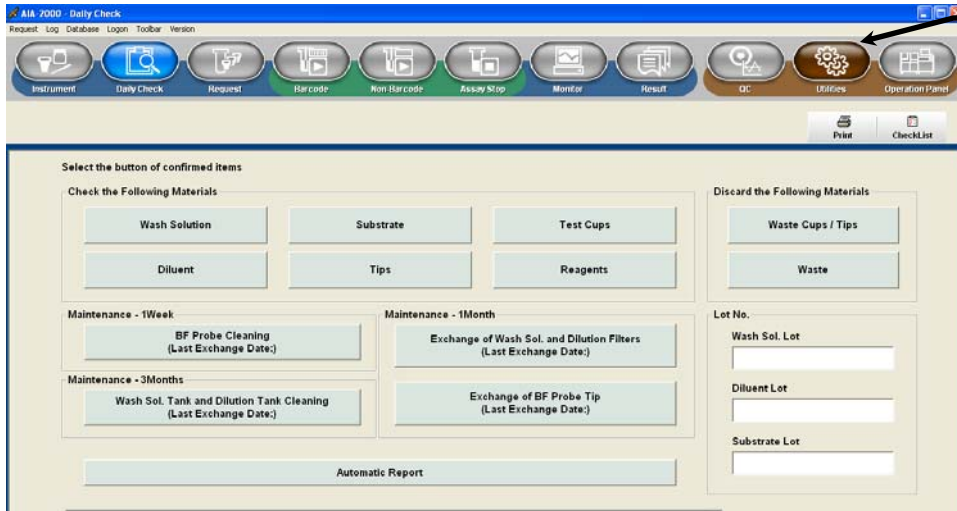


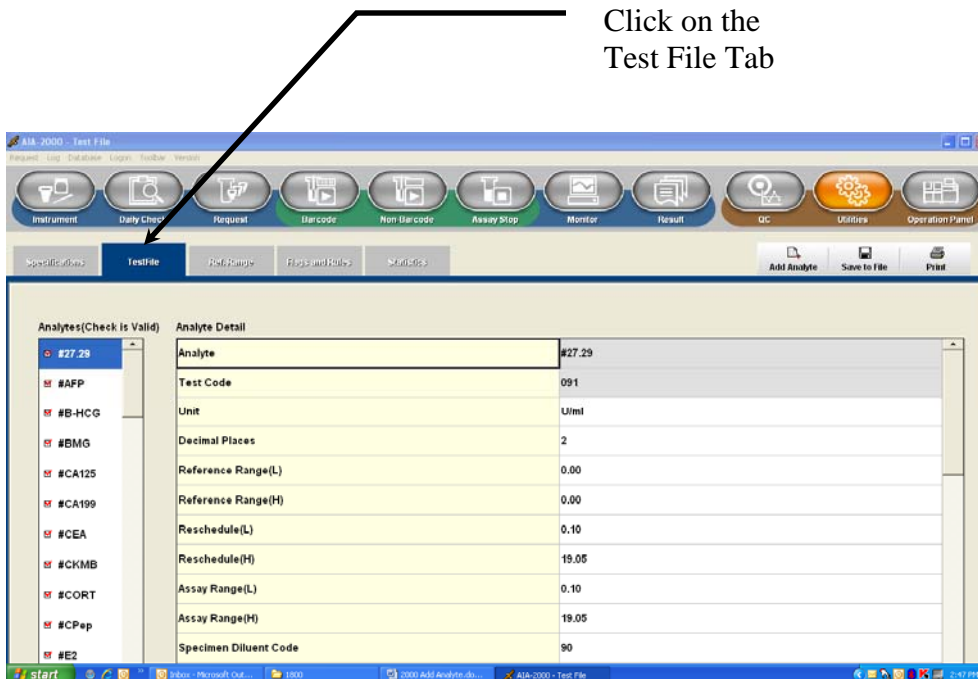
Tosoh AIA-2000 -- Adding a Test File

1. Log on to the AIA-2000 application.
2. Insert the Test File CD into the CD Drive.
3. From the Menu Bar, select Utilities



Select Utilities

4. Select the Test File tab.

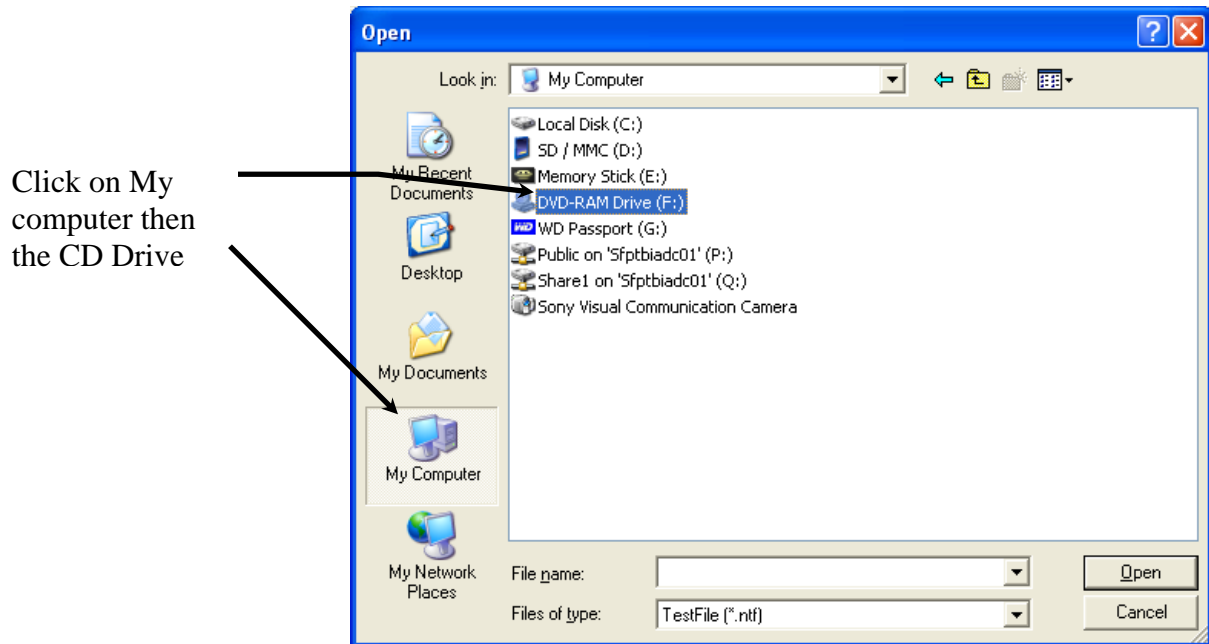


Click on the Test File Tab

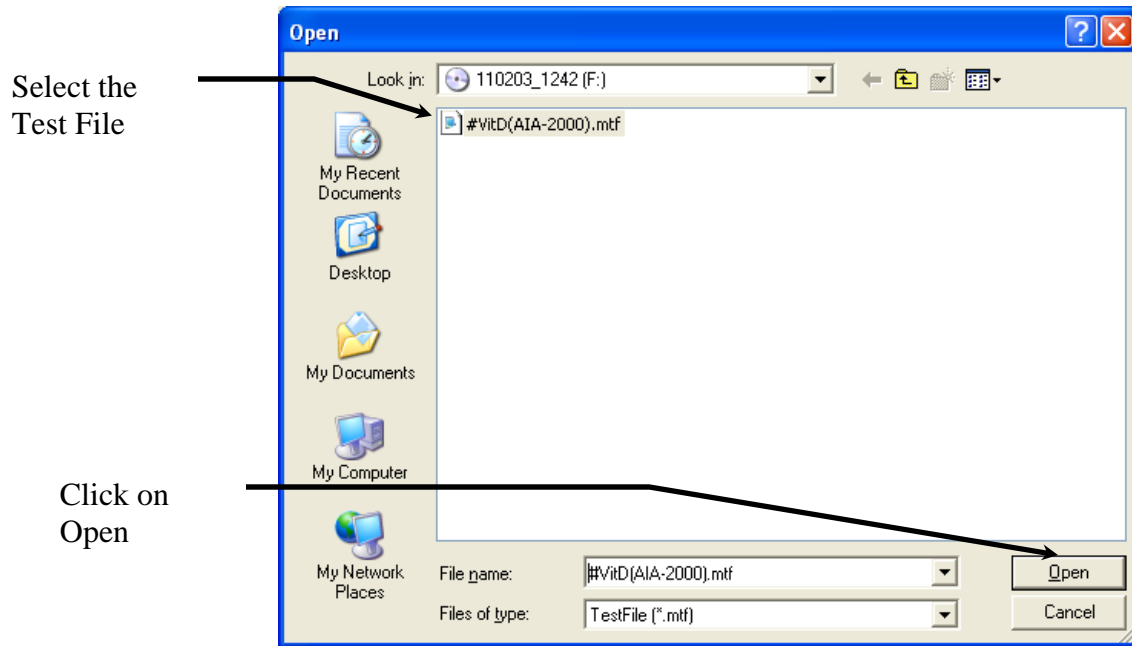
5. Select Add Analyte



6. From the pop up window select My Computer then select the CD Drive (the letter of the CD drive may be different than pictured).



7. After selecting the CD drive letter, the test file will appear in the Open window. Click on the test file then select Open.



8. The Test File will appear at the end on the Test File list. Double check all parameters.
9. Remove the CD from the CD drive.