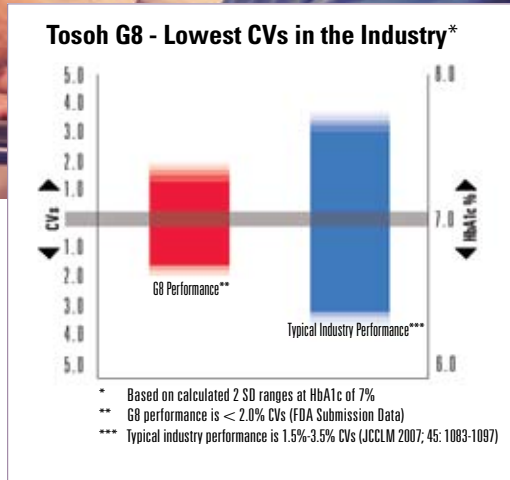
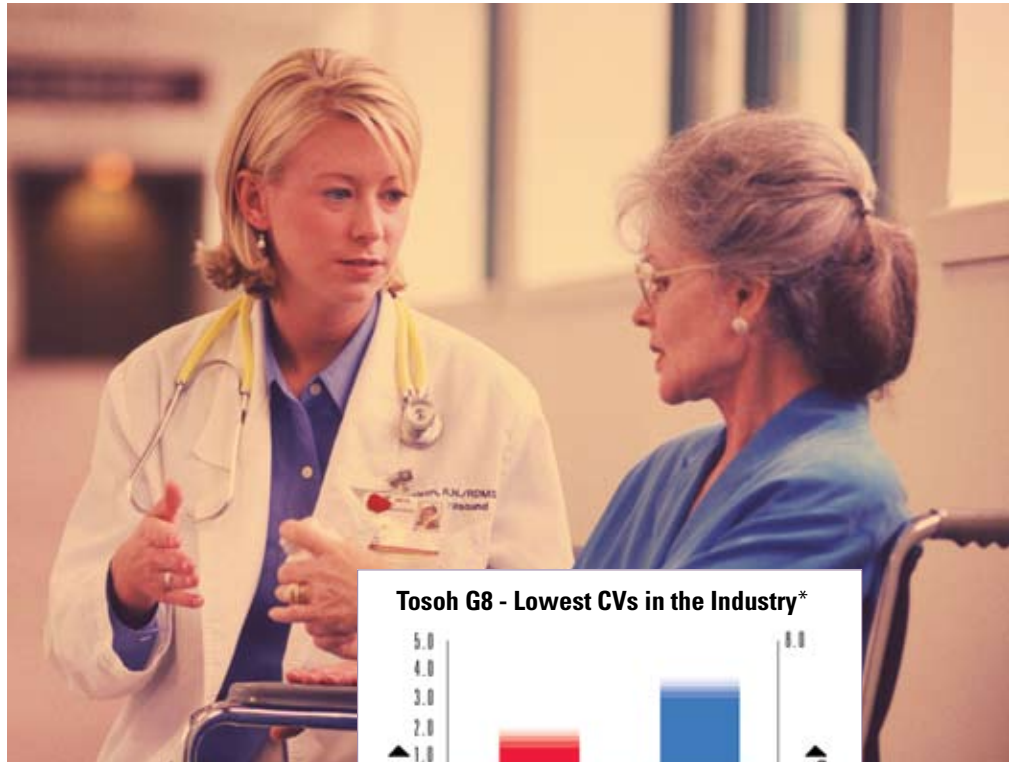




# Deliver HbA1c Results with Confidence

## Tosoh Leads Industry for HbA1c Precision

Utilizing the Gold Standard Ion-Exchange Method of HbA1c Measurement, the **Tosoh Automated Glycohemoglobin Analyzer HLC-723G8** processes results quickly with less than 2% CVs. The instrument's reliability and precision provide caregivers the confidence necessary to deliver the best diagnosis and treatment.



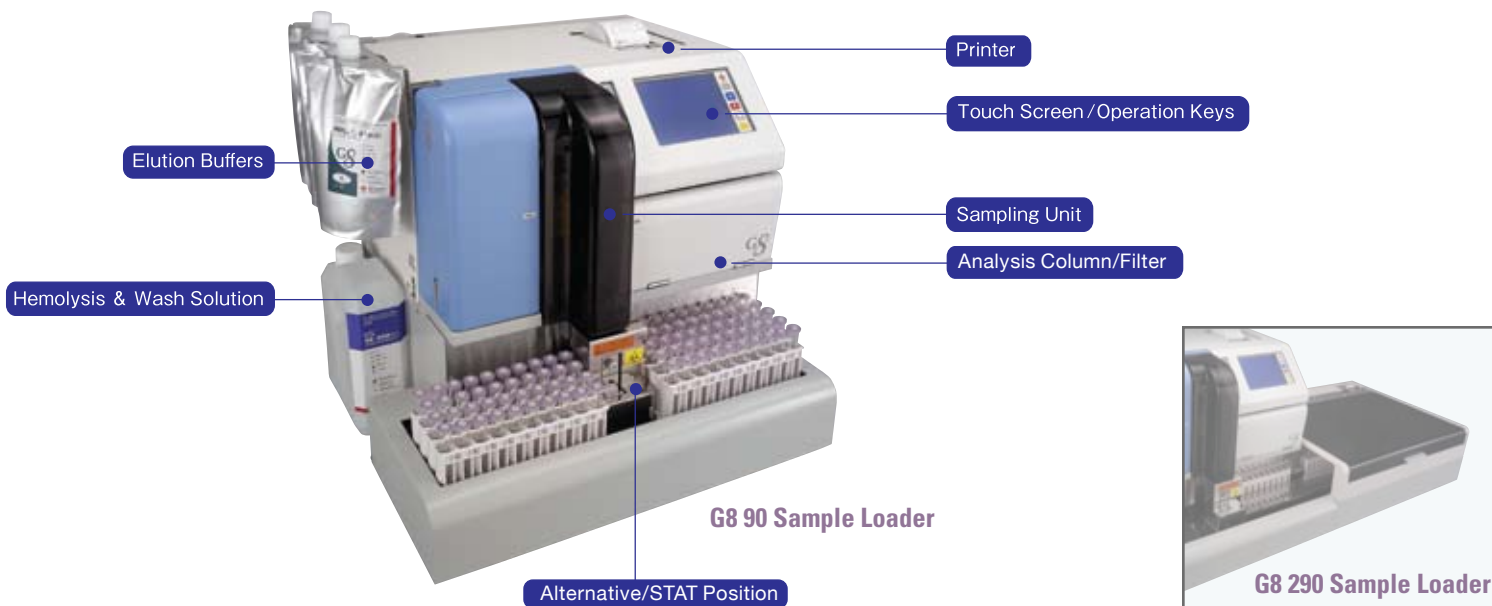
### Gold Standard Accuracy by Ion-Exchange HbA1c

- HbA1c analysis time - 1.6 minutes
- Direct determination of stable HbA1c
- Less than 2% CVs
- Simple touch-screen operation
- NGSP certified
- Low maintenance
- Flexible tube sizes
- 90 Sample Loader (Optional 290 Sample Loader available)
- Compact footprint W 21" (530 mm) x D 20" (515 mm) x H 19" (482 mm)



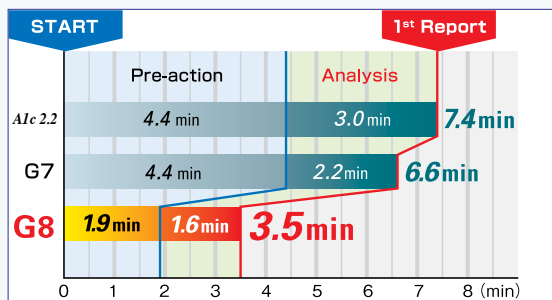
**TOSOH BIOSCIENCE, INC.**

TOSOH AUTOMATED GLYCOHEMOGLOBIN ANALYZER HLC-723G8



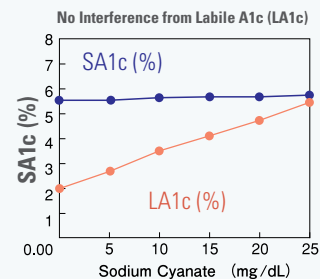
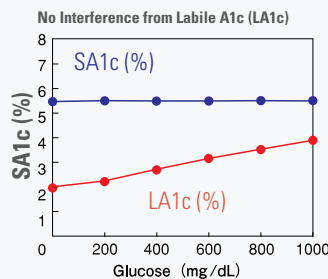
## Fast

The time to first result is 3.5 minutes. Analysis time is only 1.6 minutes.



## Accurate and Precise

The G8 provides direct determination of stable HbA1c (SA1c) with less than 2% CVs. Through Tosoh's development of a non-porous ion exchange HPLC column, HbA1c results are not clinically affected by the presence of most hemoglobin variants or hemoglobin derivatives.



## Simple Operation

- Touch screen
- Automatic start-up
- No sample pre-treatment
- Direct primary tube sampling



Main screen (first screen)

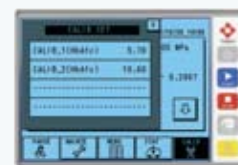
## Gold Standard Technology

Ion-exchange HPLC is the gold standard for HbA1c measurement. Ion-exchange HPLC was used in the DCCT\* study undertaken in the United States.

\*Diabetes Control and Complications Trial

## Feature Enhancements

A new calibration check function utilizes a pop-up window that displays the standard values during calibration. Features also include a flag check function with user-selectable levels, buffer monitoring, and an automatic prime function. By designing these functions from the user's perspective, safety and convenience of operation have been enhanced.



Standard value input screen



Main screen (second screen)



Tosoh Bioscience, Inc.  
6000 Shoreline Court, Suite 101  
South San Francisco, CA 94080  
Tel: (800) 248-6764  
Fax: (650) 615-0415  
[www.tosohbioscience.us](http://www.tosohbioscience.us)