

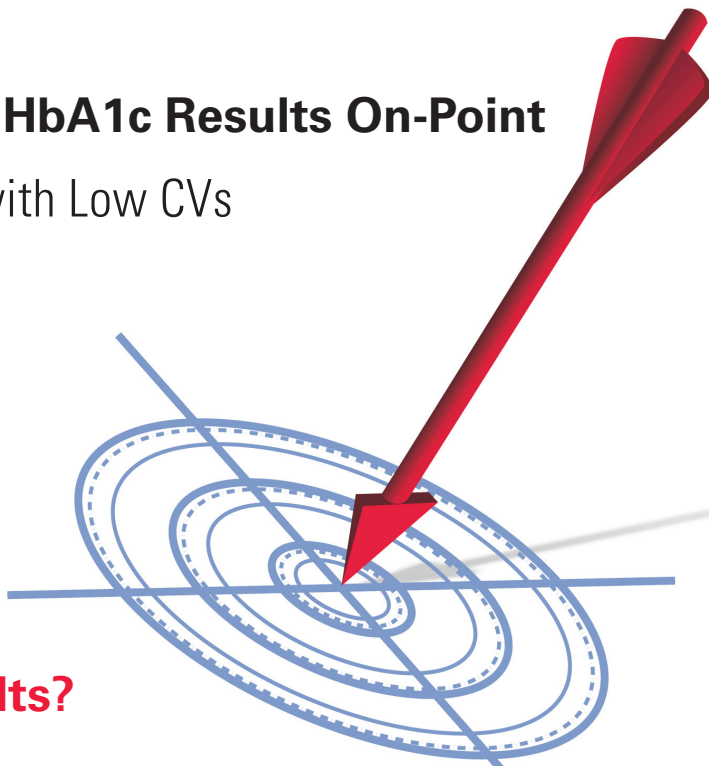


TOSOH

G8 HPLC Analyzer Delivers HbA1c Results On-Point

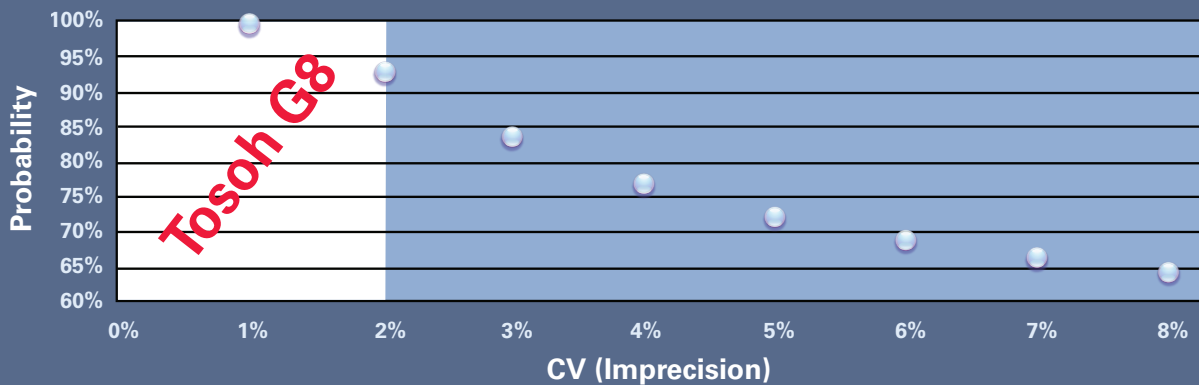
Tosoh Provides High Precision with Low CVs

Utilizing the Gold Standard Ion-Exchange Method of HbA1c Measurement, the **Tosoh Automated Glycohemoglobin Analyzer HLC-723G8** processes results quickly with less than 2% CVs.



**How On-Point
are Your HbA1c Results?**

Lower CVs Mean Higher Confidence in Your Results



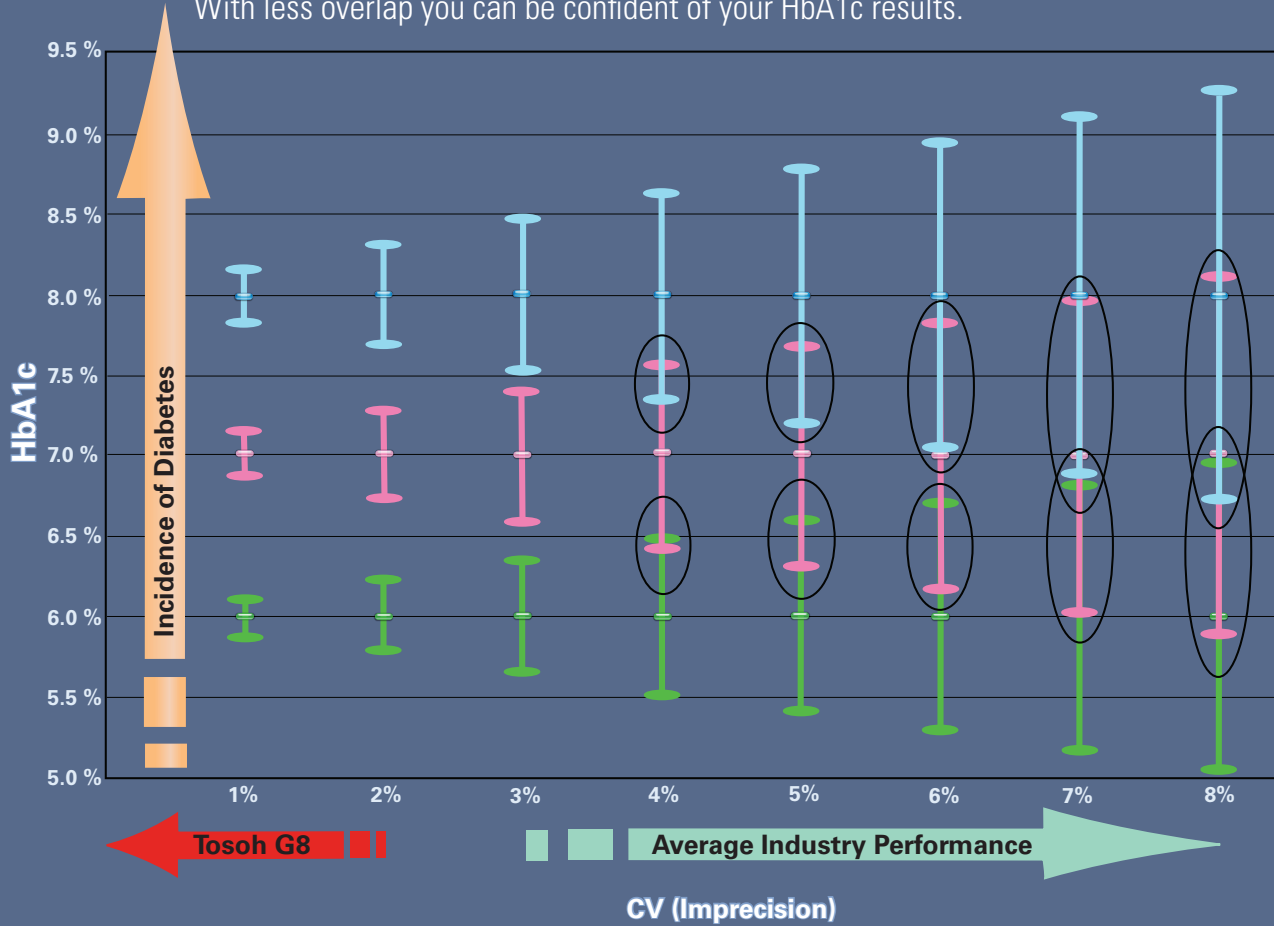
“...we can be quite confident (93% probability) that the patient is actually meeting the ADA goal if his or her A1C is 6.8% when the assay CV is 2%. We are less confident (72% probability) when the assay CV is 5% and not nearly confident enough (64% probability) when the assay precision is as high as 8%.”

Little & Rohlfing, DT&T, 2003, 5(6): 979-981

TOSOH BIOSCIENCE

Less is More: Effects of Precision on HbA1c

With less overlap you can be confident of your HbA1c results.



Data Chart

| HbA1c 8% | CV% | SD | ±2SD | HbA1c-2SD | HbA1c+2SD | HbA1c range |
|----------|-----|------|------|-----------|-----------|-------------|
| 0.08 | 8 | 0.64 | 1.28 | 6.72 | 9.28 | 6.72-9.28 |
| 0.08 | 7 | 0.56 | 1.12 | 6.88 | 9.12 | 6.88-9.12 |
| 0.08 | 6 | 0.48 | 0.96 | 7.04 | 8.96 | 7.04-8.96 |
| 0.08 | 5 | 0.40 | 0.80 | 7.20 | 8.80 | 7.20-8.80 |
| 0.08 | 4 | 0.32 | 0.64 | 7.36 | 8.64 | 7.36-8.64 |
| 0.08 | 3 | 0.24 | 0.48 | 7.52 | 8.48 | 7.52-8.48 |
| 0.08 | 2 | 0.16 | 0.32 | 7.68 | 8.32 | 7.68-8.32 |
| 0.08 | 1 | 0.08 | 0.16 | 7.84 | 8.16 | 7.84-8.16 |

| HbA1c 7% | CV% | SD | ±2SD | HbA1c-2SD | HbA1c+2SD | HbA1c range |
|----------|-----|------|------|-----------|-----------|-------------|
| 0.07 | 8 | 0.56 | 1.12 | 5.88 | 8.12 | 5.88-8.12 |
| 0.07 | 7 | 0.49 | 0.98 | 6.02 | 7.98 | 6.02-7.98 |
| 0.07 | 6 | 0.42 | 0.84 | 6.16 | 7.84 | 6.16-7.84 |
| 0.07 | 5 | 0.35 | 0.70 | 6.30 | 7.70 | 6.30-7.70 |
| 0.07 | 4 | 0.28 | 0.56 | 6.44 | 7.56 | 6.44-7.56 |
| 0.07 | 3 | 0.21 | 0.42 | 6.58 | 7.42 | 6.58-7.42 |
| 0.07 | 2 | 0.14 | 0.28 | 6.72 | 7.28 | 6.72-7.28 |
| 0.07 | 1 | 0.07 | 0.14 | 6.86 | 7.14 | 6.86-7.14 |

| HbA1c 6% | CV% | SD | ±2SD | HbA1c-2SD | HbA1c+2SD | HbA1c range |
|----------|-----|------|------|-----------|-----------|-------------|
| 0.06 | 8 | 0.48 | 0.96 | 5.04 | 6.96 | 5.04-6.96 |
| 0.06 | 7 | 0.42 | 0.84 | 5.16 | 6.84 | 5.16-6.84 |
| 0.06 | 6 | 0.36 | 0.72 | 5.28 | 6.72 | 5.28-6.72 |
| 0.06 | 5 | 0.30 | 0.60 | 5.40 | 6.60 | 5.40-6.60 |
| 0.06 | 4 | 0.24 | 0.48 | 5.52 | 6.48 | 5.52-6.48 |
| 0.06 | 3 | 0.18 | 0.36 | 5.64 | 6.36 | 5.64-6.36 |
| 0.06 | 2 | 0.12 | 0.24 | 5.76 | 6.24 | 5.76-6.24 |
| 0.06 | 1 | 0.06 | 0.12 | 5.88 | 6.12 | 5.88-6.12 |

System Features



- HbA1c analysis time - 1.6 minutes
- Direct determination of stable HbA1c
- Less than 2% CVs
- NGSP certified
- Low maintenance
- Compact footprint
- Reporting Software System available



TOSOH BIOSCIENCE, INC.

Tosoh Bioscience, Inc.
6000 Shoreline Court, Suite 101
South San Francisco, CA 94080
Tel: (800) 248-6764
Fax: (650) 615-0415
www.tosohbioscience.us